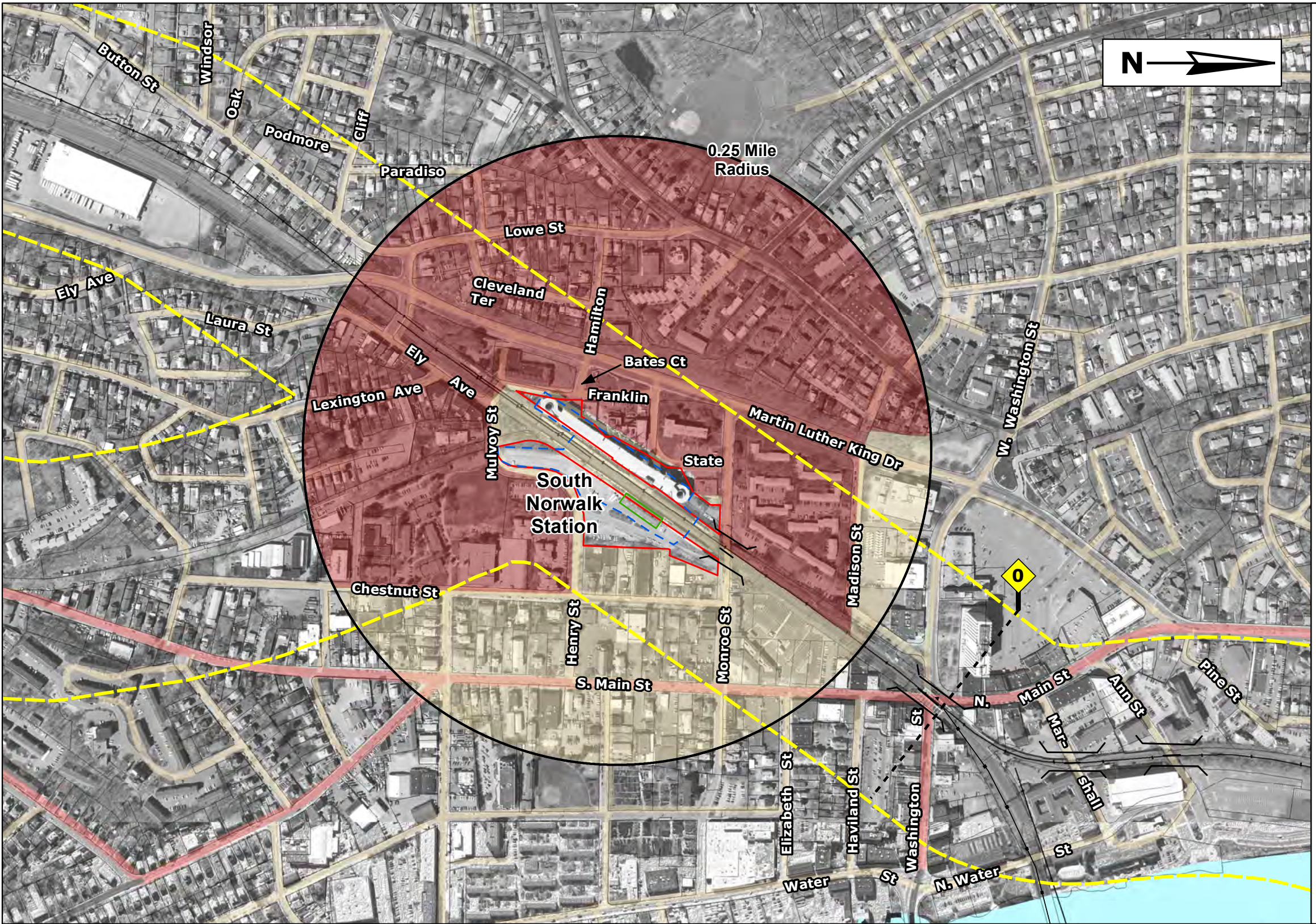


# Appendix C - Station Area TOD Potential Maps

---

South Norwalk	71
Merritt 7	72
Wilton	73
Cannondale	74
Georgetown	75
West Redding	76
Branchville	77
Bethel	78
Danbury	79
North Danbury (#1)	80
North Danbury (#2)	81
Brookfield (#1)	82
Brookfield (#2)	83
New Milford (#1)	84
New Milford (#2)	85
New Milford (#3, #4A&B, and #5)	86





**Legend**

- Railroad Track
- 1000 Foot Study Corridor
- Town Boundary
- Railroad Milepost Marker
- Railroad Crossing
- Private Railroad Crossing
- Interstate Highway
- US Highway
- State Road
- Local Road
- Rivers/Streams
- Lakes/Ponds
- Parcel Boundary
- Existing Station Parking
- CT DOT Property Boundary / Potential Parking Expansion
- Railroad Station Building
- Potential TOD
- Ongoing / Expansion

Data Sources:

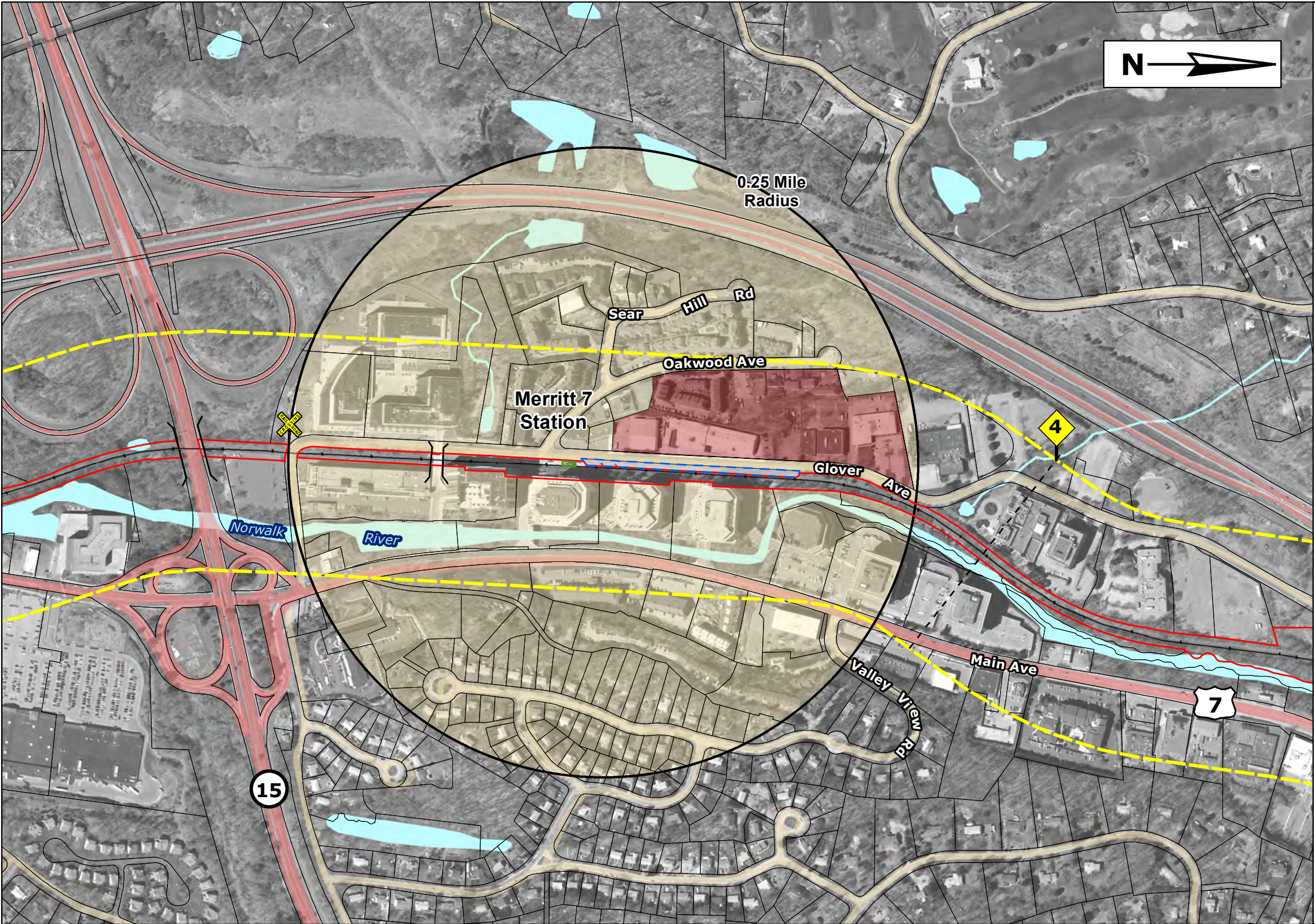
Parcel layer: CT DEP  
Roads layer: CT DEP, updated by URS  
RR Track: CT DEP  
Town Boundary: CT DEP  
Hydrography: CT DEP, updated by URS  
RR Milepost Markers and Grade Crossings: Metro-North Track Charts

Note: This TOD map was developed for use as a planning document. Development delinations may not be exact.



PROJECT TITLE: <b>DANBURY BRANCH IMPROVEMENT PROGRAM &amp; ELECTRIFICATION ENVIRONMENTAL IMPACT STATEMENT</b>			TOWN(S): <b>NORWALK (South)</b>	PROJECT NO: <b>302-008</b>
	GIS MAPPING BY: URS CORPORATION		MAP TITLE: <b>TRANSIT ORIENTED DEVELOPMENT (TOD) MAP</b>	MAP NO:  SHEET NO: <b>1</b>
LAST REV: 03/2010				





**Legend**

Railroad Track

1000 Foot Study Corridor

Town Boundary

Railroad Milepost Marker

Railroad Crossing

Private Railroad Crossing

Interstate Highway

US Highway

State Road

Local Road

Rivers/Streams

Lakes/Ponds

Parcel Boundary

Existing Station Parking

CT DOT Property Boundary / Potential Parking Expansion

Railroad Station Building

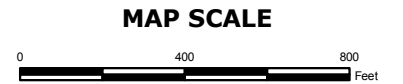
Potential TOD

Ongoing / Expansion

Data Sources:

Parcel layer: CT DEP  
Roads layer: CT DEP, updated by URS  
RR Track: CT DEP  
Town Boundary: CT DEP  
Hydrography: CT DEP, updated by URS  
RR Milepost Markers and Grade Crossings: Metro-North Track Charts

Note: This TOD map was developed for use as a planning document. Development delineations may not be exact.

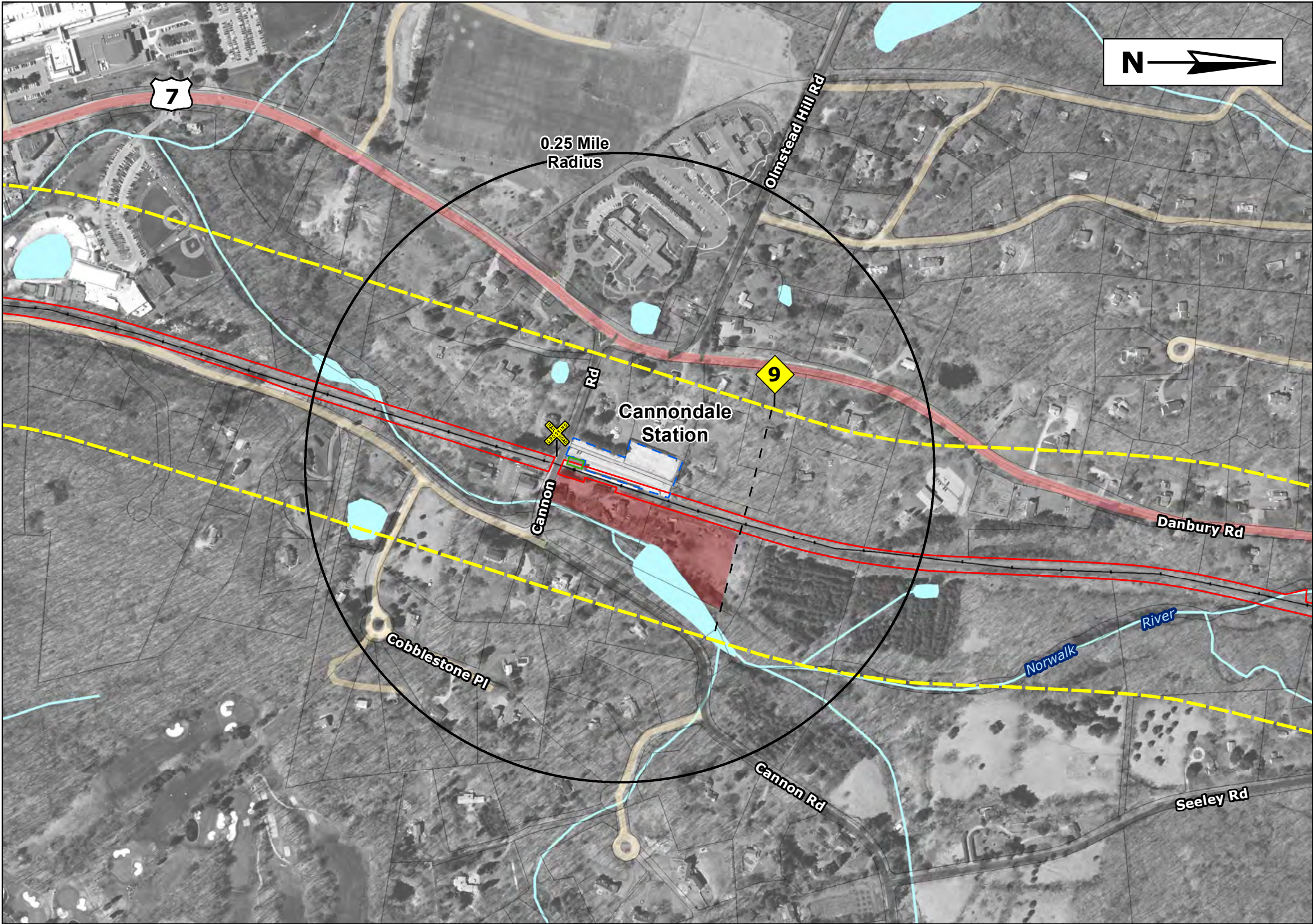


<div>PROJECT TITLE:</div> <div><b>DANBURY BRANCH IMPROVEMENT PROGRAM &amp; ELECTRIFICATION ENVIRONMENTAL IMPACT STATEMENT</b></div>	<div><b>STATE OF CONNECTICUT</b></div> <div><b>DEPARTMENT OF TRANSPORTATION</b></div> <div></div>	<div>TOWN(S):</div> <div>NORWALK (Merritt 7)</div>	<div>PROJECT NO:</div> <div>302-008</div>
<div> GIS MAPPING BY: URS CORPORATION</div> <div>LAST REV: 03/2010</div>		<div>MAP TITLE:</div> <div>TRANSIT ORIENTED DEVELOPMENT (TOD) MAP</div>	<div>MAP NO:</div> <div></div> <div>SHEET NO:</div> <div>2</div>









**Legend**

Railroad Track

1000 Foot Study Corridor

Town Boundary

Railroad Milepost Marker

Railroad Crossing

Private Railroad Crossing

Interstate Highway

US Highway

State Road

Local Road

Rivers/Streams

Lakes/Ponds

Parcel Boundary

Existing Station Parking

CT DOT Property Boundary / Potential Parking Expansion

Railroad Station Building

Potential TOD

Ongoing / Expansion

Data Sources:

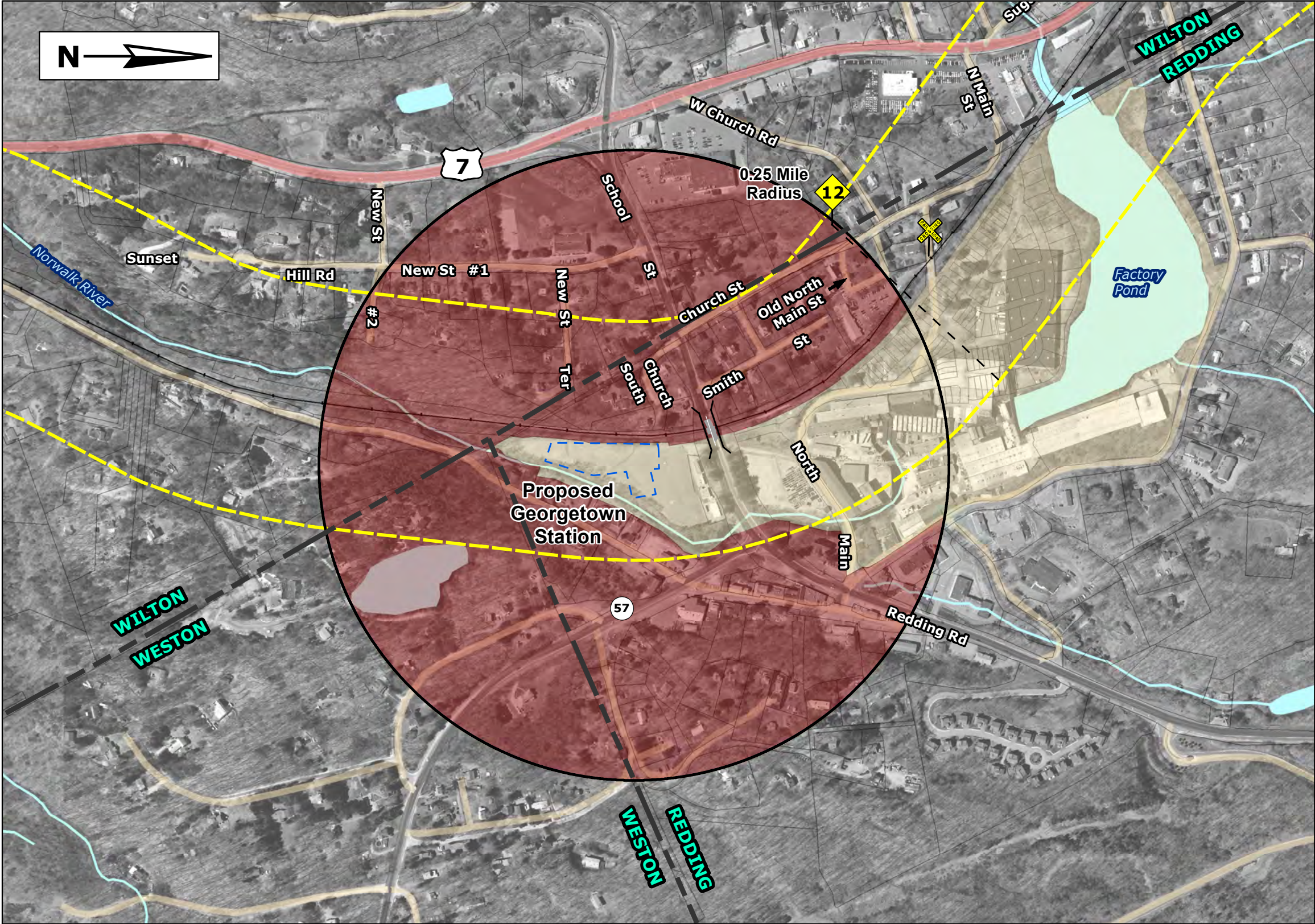
Parcel layer: CT DEP  
Roads layer: CT DEP, updated by URS  
RR Track: CT DEP  
Town Boundary: CT DEP  
Hydrography: CT DEP, updated by URS  
RR Milepost Markers and Grade Crossings: Metro-North Track Charts

Note: This TOD map was developed for use as a planning document. Development delineations may not be exact.



PROJECT TITLE: <b>DANBURY BRANCH IMPROVEMENT PROGRAM &amp; ELECTRIFICATION ENVIRONMENTAL IMPACT STATEMENT</b>				TOWN(S): WILTON (Cannondale)	PROJECT NO: 302-008
	GIS MAPPING BY: URS CORPORATION	LAST REV: 03/2010		MAP TITLE: TRANSIT ORIENTED DEVELOPMENT (TOD) MAP	MAP NO: SHEET NO: 4

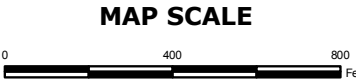




Data Sources:

Parcel layer: CT DEP  
Roads layer: CT DEP, updated by URS  
RR Track: CT DEP  
Town Boundary: CT DEP  
Hydrography: CT DEP, updated by URS  
RR Milepost Markers and  
Grade Crossings: Metro-North Track Charts

Note: This TOD map was developed for use as a planning document. Development delineations may not be exact.



PROJECT TITLE: <b>DANBURY BRANCH IMPROVEMENT PROGRAM &amp; ELECTRIFICATION ENVIRONMENTAL IMPACT STATEMENT</b>		<b>STATE OF CONNECTICUT DEPARTMENT OF TRANSPORTATION</b>		TOWN(S): <b>REDDING (Georgetown)</b>	PROJECT NO: <b>302-008</b>
GIS MAPPING BY: URS CORPORATION      LAST REV: 03/2010				MAP TITLE: <b>TRANSIT ORIENTED DEVELOPMENT (TOD) MAP</b>	MAP NO:  SHEET NO: <b>5</b>

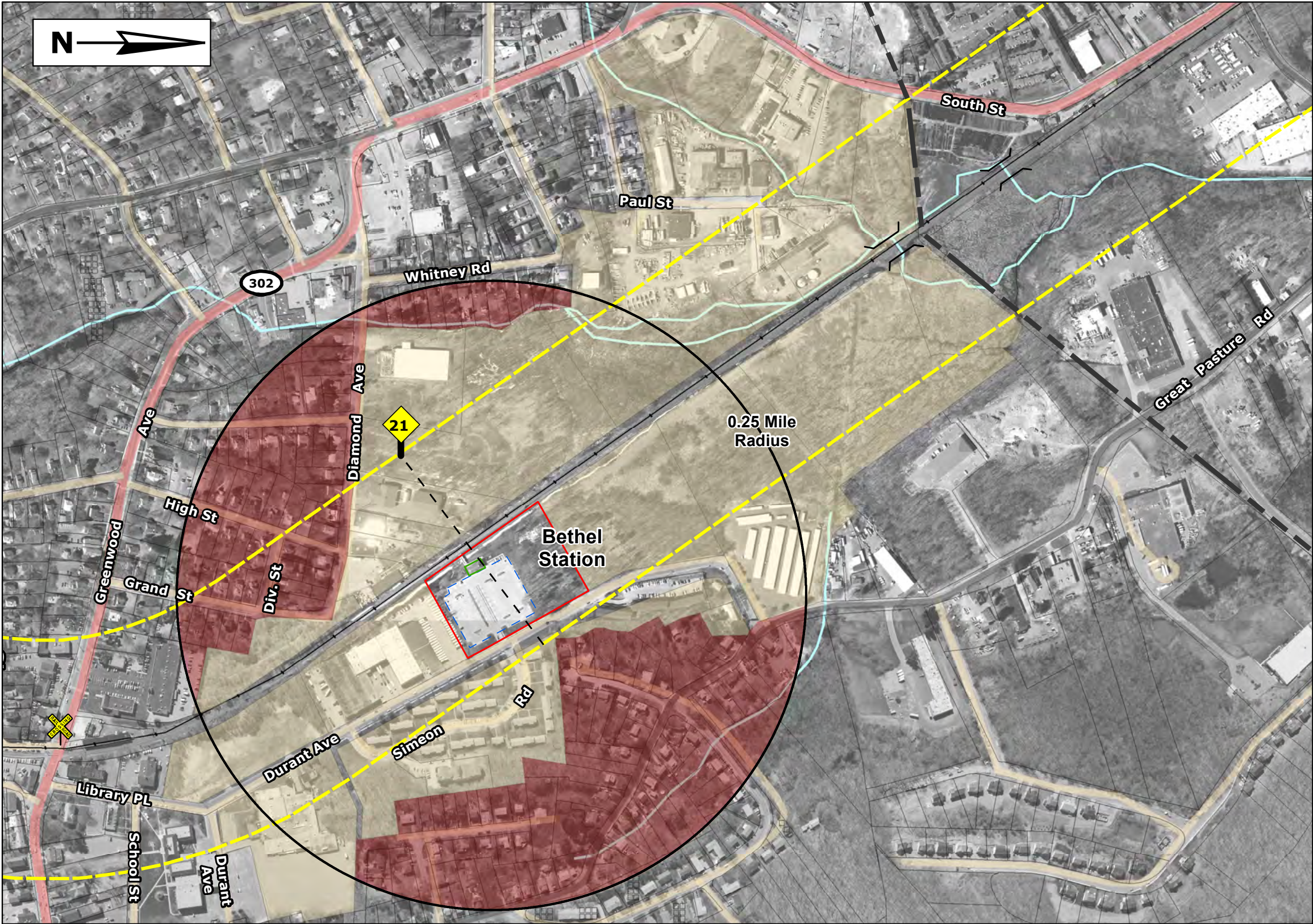












**Legend**

Railroad Track

1000 Foot Study Corridor

Town Boundary

Railroad Milepost Marker

Railroad Crossing

Private Railroad Crossing

Interstate Highway

US Highway

State Road

Local Road

Rivers/Streams

Lakes/Ponds

Parcel Boundary

Existing Station Parking

CT DOT Property Boundary / Potential Parking Expansion

Railroad Station Building

Potential TOD

Ongoing / Expansion

Data Sources:

Parcel layer: CT DEP  
Roads layer: CT DEP, updated by URS  
RR Track: CT DEP  
Town Boundary: CT DEP  
Hydrography: CT DEP, updated by URS  
RR Milepost Markers and  
Grade Crossings: Metro-North Track Charts

Note: This TOD map was developed for use as a planning document. Development delineations may not be exact.



PROJECT TITLE: <b>DANBURY BRANCH IMPROVEMENT PROGRAM &amp; ELECTRIFICATION ENVIRONMENTAL IMPACT STATEMENT</b>		<b>STATE OF CONNECTICUT DEPARTMENT OF TRANSPORTATION</b> 	TOWN(S): <b>BETHEL</b>	PROJECT NO: <b>302-008</b>
GIS MAPPING BY: URS CORPORATION      LAST REV: 03/2010			MAP TITLE: <b>TRANSIT ORIENTED DEVELOPMENT (TOD) MAP</b>	MAP NO:  SHEET NO: <b>8</b>













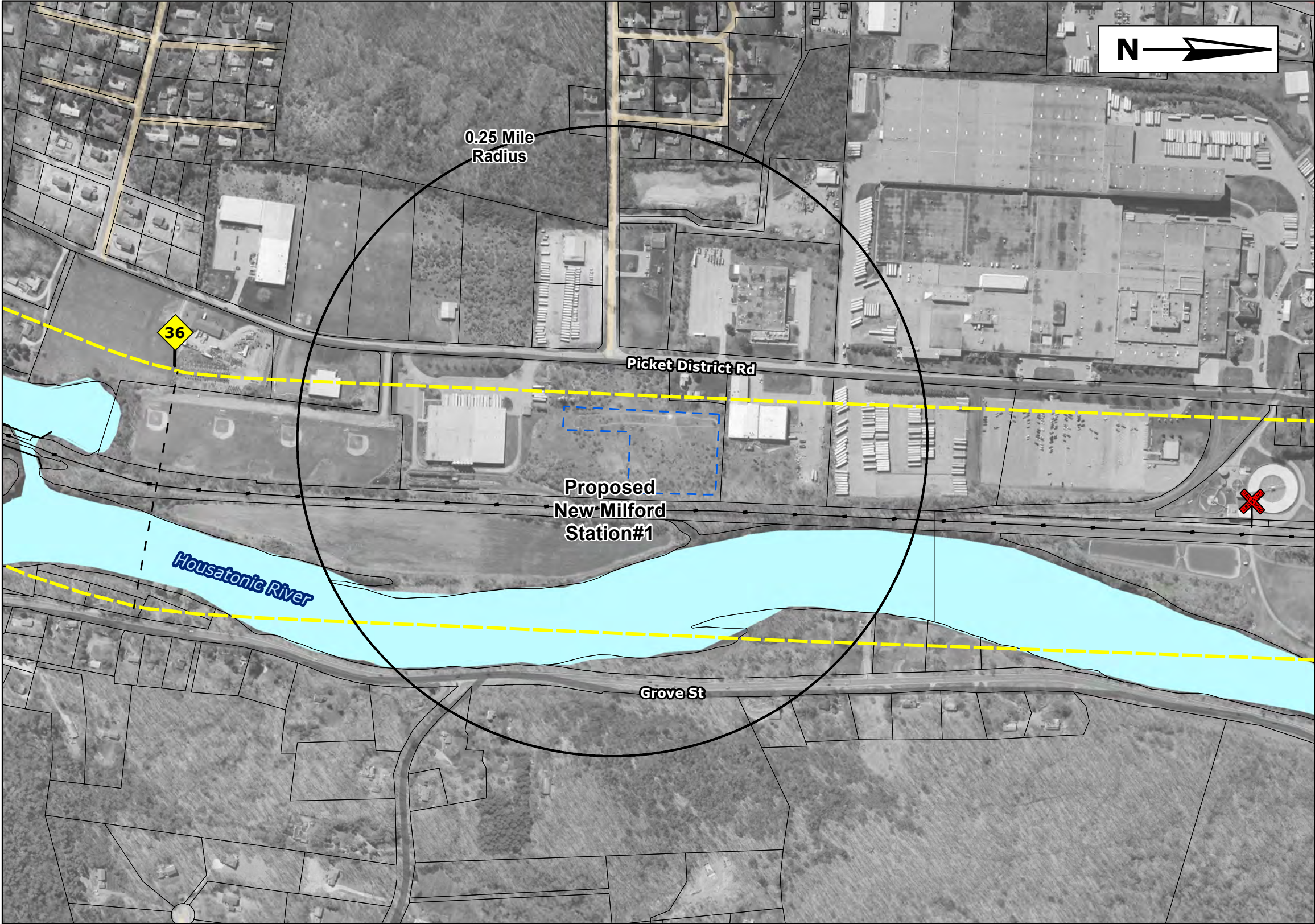












**Legend**

Railroad Track

1000 Foot Study Corridor

Town Boundary

1

Railroad Milepost Marker

X

Railroad Crossing

X

Private Railroad Crossing

95

Interstate Highway

7

US Highway

15

State Road

Local Road

Rivers/Streams

Lakes/Ponds

Parcel Boundary

Station Parking

CT DOT Property Boundary / Potential Parking Expansion

Railroad Station Building

Potential TOD

Ongoing / Expansion

Data Sources:

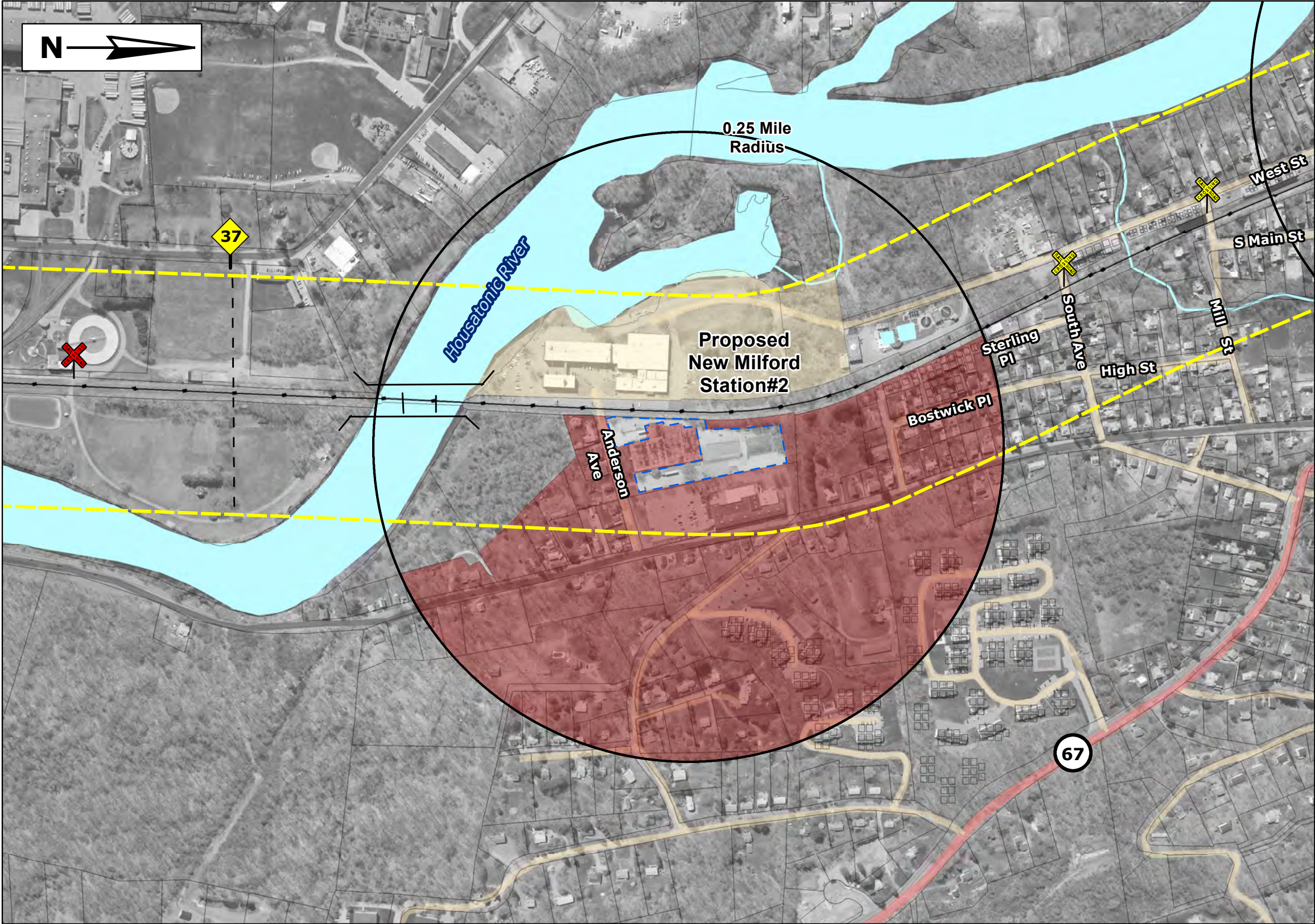
Parcel layer: CT DEP  
Roads layer: CT DEP, updated by URS  
RR Track: CT DEP  
Town Boundary: CT DEP  
Hydrography: CT DEP, updated by URS  
RR Milepost Markers and Grade Crossings: Metro-North Track Charts

Note: This TOD map was developed for use as a planning document. Development delineations may not be exact.



PROJECT TITLE: <b>DANBURY BRANCH IMPROVEMENT PROGRAM &amp; ELECTRIFICATION ENVIRONMENTAL IMPACT STATEMENT</b>		<b>STATE OF CONNECTICUT DEPARTMENT OF TRANSPORTATION</b> 	TOWN(S): NEW MILFORD (#1)	PROJECT NO: 302-008
GIS MAPPING BY: URS CORPORATION      LAST REV: 03/2010			MAP TITLE: TRANSIT ORIENTED DEVELOPMENT (TOD) MAP	MAP NO:
				SHEET NO: 14





**Legend**

Railroad Track

1000 Foot Study Corridor

Town Boundary

1

Railroad Milepost Marker

X

Railroad Crossing

X

Private Railroad Crossing

95

Interstate Highway

7

US Highway

15

State Road

Local Road

Rivers/Streams

Lakes/Ponds

Parcel Boundary

Station Parking

CT DOT Property Boundary / Potential Parking Expansion

Railroad Station Building

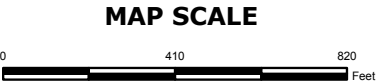
Potential TOD

Ongoing / Expansion

Data Sources:

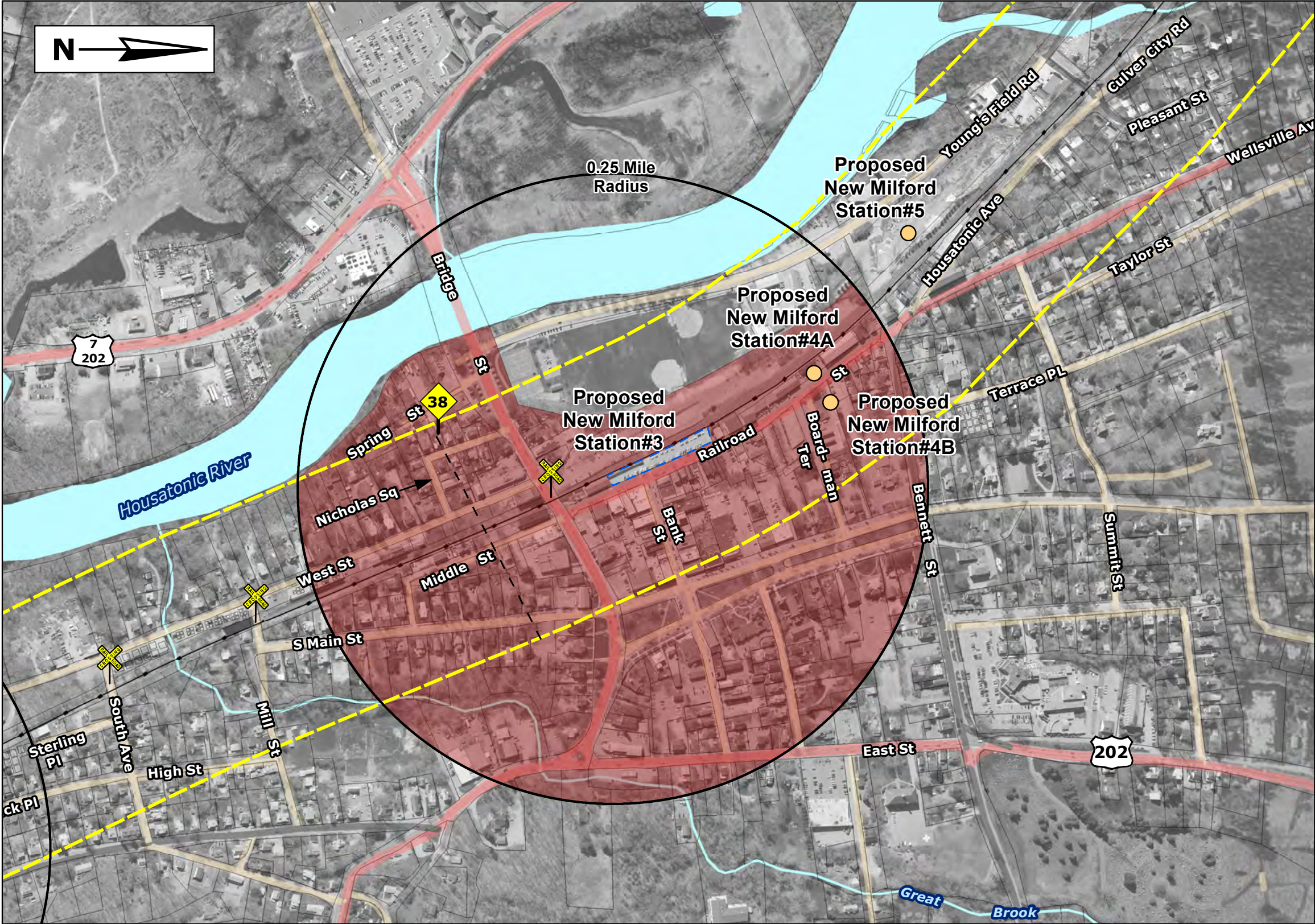
Parcel layer: CT DEP  
Roads layer: CT DEP, updated by URS  
RR Track: CT DEP  
Town Boundary: CT DEP  
Hydrography: CT DEP, updated by URS  
RR Milepost Markers and  
Grade Crossings: Metro-North Track Charts

Note: This TOD map was developed for use as a planning document. Development delineations may not be exact.



PROJECT TITLE: <b>DANBURY BRANCH IMPROVEMENT PROGRAM &amp; ELECTRIFICATION ENVIRONMENTAL IMPACT STATEMENT</b>		<b>STATE OF CONNECTICUT DEPARTMENT OF TRANSPORTATION</b> 	TOWN(S): <b>NEW MILFORD (#2)</b>	PROJECT NO: <b>302-008</b>
GIS MAPPING BY: URS CORPORATION      LAST REV: 03/2010			MAP TITLE: <b>TRANSIT ORIENTED DEVELOPMENT (TOD) MAP</b>	MAP NO:  SHEET NO: <b>15</b>





**Legend**

- Railroad Track
- 1000 Foot Study Corridor
- Town Boundary
- Railroad Milepost Marker
- Railroad Crossing
- Private Railroad Crossing
- Interstate Highway
- US Highway
- State Road
- Local Road
- Rivers/Streams
- Lakes/Ponds
- Parcel Boundary
- Station Parking
- CT DOT Property Boundary / Potential Parking Expansion
- Railroad Station Building
- Potential TOD
- Ongoing / Expansion
- Proposed Station Location #4A, #4B, #5

Data Sources:

Parcel layer: CT DEP  
Roads layer: CT DEP, updated by URS  
RR Track: CT DEP  
Town Boundary: CT DEP  
Hydrography: CT DEP, updated by URS  
RR Milepost Markers and Grade Crossings: Metro-North Track Charts

Note: This TOD map was developed for use as a planning document. Development delineations may not be exact.



PROJECT TITLE: <b>DANBURY BRANCH IMPROVEMENT PROGRAM &amp; ELECTRIFICATION ENVIRONMENTAL IMPACT STATEMENT</b>		TOWN(S): <b>NEW MILFORD (#3 through #5)</b>		PROJECT NO: <b>302-008</b>
STATE OF CONNECTICUT DEPARTMENT OF TRANSPORTATION		MAP TITLE: <b>TRANSIT ORIENTED DEVELOPMENT (TOD) MAP</b>		MAP NO:
URSGIS MAPPING BY: URS CORPORATIONLAST REV: 03/2010				SHEET NO: <b>16</b>